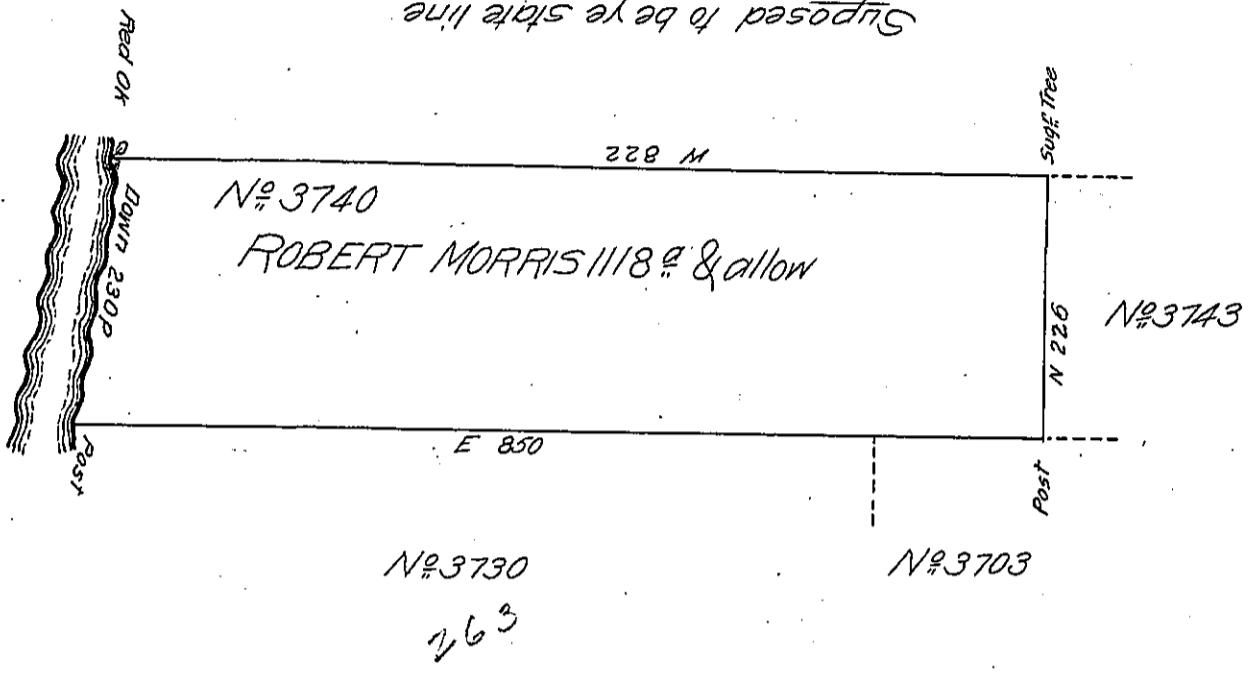


The Courses & Dist.  
Down the river  
Beginning at Ared Ok

then S11 W16  
S5 E12 S7 W32  
S15 W74 S2 W96  
to A Post



By Virtue of A Warrant granted to Robert Morris the 5<sup>th</sup> day of March 1793 & No 3740  
Surv<sup>d</sup> the 3<sup>d</sup> Day of Aug<sup>t</sup> 1793 the above described Tract of Land Situate in Northumb<sup>r</sup> Cou-  
nty on the East Side of Alegany River adjoining Said River & other Land of Said Mor-  
ris Containing one Thousand one hundred & Eighteen acres & allow.

P<sup>r</sup> W<sup>m</sup> P. Brady D.S.

To Daniel Brodhead Esq<sup>r</sup> }  
Surveyor General }

IN TESTIMONY that the above is a copy of the original remaining on file in  
the Department of Internal Affairs of Pennsylvania, made  
conformably to an Act of Assembly approved the 16th day of  
February, 1833, I have hereunto set my Hand and caused  
the Seal of said Department to be affixed at Harrisburg,  
this fifth day of February 1906

*Grace B. Brown*  
Secretary of Internal Affairs.